

## **GCP TRANSPORT RESPONSE TO COVID-19 ADDITIONAL TRAFFIC MANAGEMENT MEASURES IN THE NEWTOWN AREA**

### **NEWTOWN AREA – PHASE 2 EXPERIMENTAL MEASURES**

In August we sent out leaflets to local households explaining about some changes that were being made to local streets in the Newtown area to reallocate road-space to walking and cycling to help the recovery from the Covid-19 pandemic and support social distancing. These measures, which prevent through traffic movements but retain access to all properties, could offer longer-term benefits by providing lower traffic routes for walking and cycling which could be made permanent. On behalf of the County Council, we are now introducing a second phase of experimental measures in the area to support walking and cycling and to prevent further through traffic movements.

#### **WHAT DOES PHASE 2 INVOLVE?**

In Phase 1, three short sections of road were closed to all motor vehicles as follows:

- Bateman Street, immediately west of Panton Street
- Coronation Street, immediately west of Panton Street
- Pemberton Terrace immediately west of Panton Street

At the same time the section of Coronation Street between St. Eligius Street and Panton Street became two-way during the trial period.

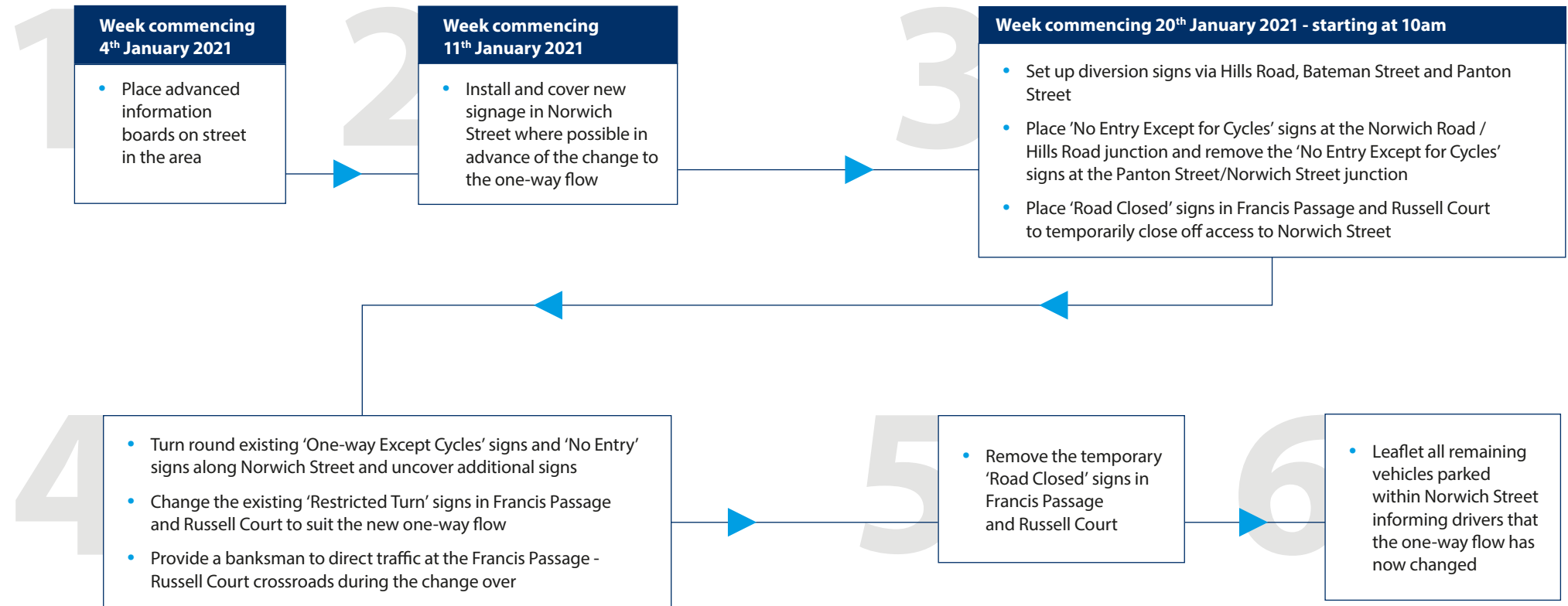
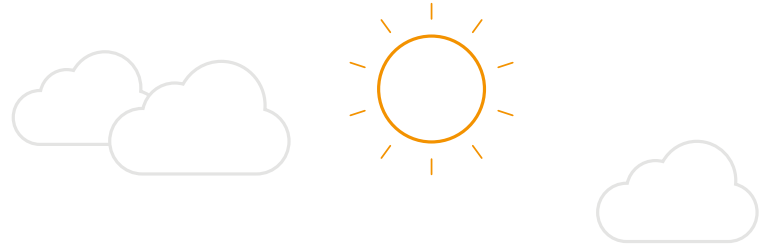
Phase 2 will involve the following additional measures being installed:

- Closing a short section of Panton Street mid-way between Saxon Street and Union Road to all motor vehicles
- Making the section of Panton Street between Saxon Street and Union Road two-way for all vehicles on either side of the road closure point
- Permitting cyclists to use the sections of Panton Street between Saxon Street and Lensfield Road and between Russell Court and Union Road in both directions with motor vehicles still required to go one-way, northbound
- Reversing the current one-way flow in Norwich Street so that it runs from Panton Street towards Hills Road (cycling will still be permitted in both directions) (Please see over)

At the Panton Street closure point, planters and bollards will be installed to prevent the passage of motor vehicles but openings will be provided to cater for cycle movements. Additional signing will be provided to give effect to the additional road closure, for the reversed one-way flow in Norwich Street and to allow cycling in both directions on sections of Panton Street.

## NORWICH STREET – REVERSING THE ONE-WAY FLOW

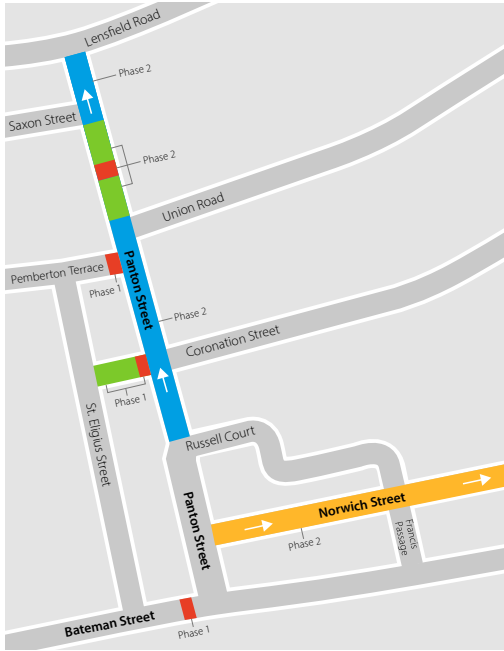
The following steps will be taken to reverse the existing one-way flow in Norwich Street. Once completed, motor vehicles will need to access Norwich Street from Panton Street and leave via Hills Road. Entrance and exit via either Francis Passage or Russell Court will be temporarily suspended during the change-over period but will be reinstated once the work is completed. Pedal cyclists will continue to use Norwich Street in both directions under the new experimental arrangements.







The diversion route signage will be kept in place for a two- week period.



## MAP OF PHASE 1 AND 2 EXPERIMENTAL TRAFFIC MANAGEMENT MEASURES



-  Experimental prohibition of motor vehicles
-  Experimental two-way traffic
-  Experimental one-way for motor vehicles (cycling permitted in both directions)
-  Experimental reversal of one-way for motor vehicles (cycling permitted in both directions)

### WHEN IS THIS HAPPENING?

An experimental traffic regulation order (ETRO) for the Phase 2 measures has now been made which will come into operation on Wednesday, 20th January 2021 when barriers and associated signing to implement the additional experimental measures will be installed.

### HOW CAN WE COMMENT?

During the first 6 months of their operation, objections to making the Phase 2 measures permanent can be lodged. We would also invite other comments and feedback during this time. Objections and other comments should be submitted in writing to:

**Email:** [contactus@greatercambridge.org.uk](mailto:contactus@greatercambridge.org.uk)

**Letter:** to; Cambridgeshire County Council, Business Intelligence Service, OCT 1224, Castle Hill, Cambridge CB3 0AP

(We have limited capacity to receive post at the present time, so please only post a response to us if this is the only way you are able to respond.)

A public consultation on the Phase 2 experimental measures will take place during spring 2021, which will seek feedback on their effects. The findings of this, along with those from the Phase 1 consultation, are due to be presented at the autumn meetings of the GCP's Joint Assembly and Executive Board

### PLANNED ACCESS REQUIREMENTS

Access to all properties by motor vehicle, including for Blue Badge holders, will be maintained either side of the additional closure point in Panton Street but the routes used may be longer and in some cases less convenient. Where planned access is required for large vehicles that may have difficulty in leaving the area, such as for moving house, arrangements can be made with the County Council in advance to temporarily remove a locked bollard at the closure point to allow for this. Contact details as follows:

**Email:** [parkingcontrol@cambridgeshire.gov.uk](mailto:parkingcontrol@cambridgeshire.gov.uk)

**Tel:** 01223 727915

### GET IN TOUCH

 [contactus@greatercambridge.org.uk](mailto:contactus@greatercambridge.org.uk)

 0345 0455212

 [www.twitter.com/GreaterCambs](https://www.twitter.com/GreaterCambs)

 [www.facebook.com/GreaterCam](https://www.facebook.com/GreaterCam)

 **Cambridgeshire County Council, Business Intelligence Service, OCT 1224, Castle Hill, Cambridge CB3 0AP**

(We have limited capacity to receive post at the present time, so please only post a response to us if this is the only way you are able to respond.)