

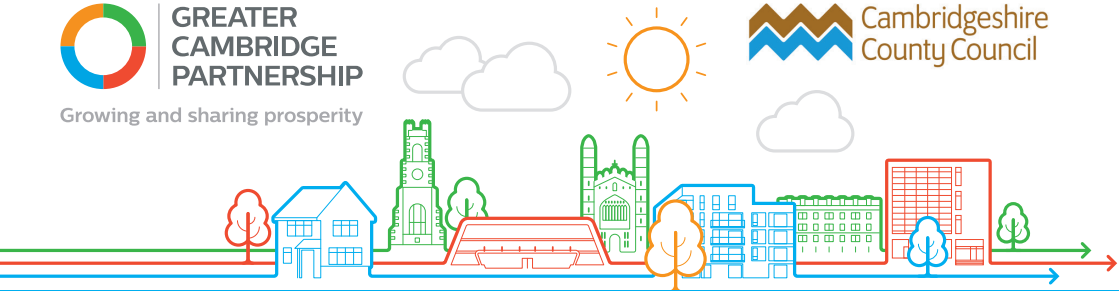


**GREATER  
CAMBRIDGE  
PARTNERSHIP**

Growing and sharing prosperity



**Cambridgeshire  
County Council**



**GCP TRANSPORT RESPONSE TO COVID-19  
TRAFFIC MANAGEMENT MEASURES IN CAMBRIDGE**

**SILVER STREET  
BUS GATE**

**WHAT'S HAPPENING?**

Cambridgeshire County Council is making various changes to its highway network which will reallocate road-space to walking and cycling to help the recovery from the Covid-19 pandemic and support social distancing.

As people start to travel again, and with limited space available on our roads, we need more people to walk and cycle to create space for social distancing and avoid congestion and a return to high levels of air pollution. If more people are able to complete their journeys by walking and cycling, then our transport

network will be able to support recovery by keeping congestion low and making sure space on public transport is available for those who need to travel this way.

The Greater Cambridge Partnership (GCP) is working with the County Council to introduce a series of experimental measures to make it easier and safer for people to cycle and walk around Cambridge, by closing various streets to through traffic movements on an experimental basis. These measures could offer longer-term benefits by providing lower traffic routes for walking and cycling which could be made permanent at the end of the experiment.

**One of the measures included in the experimental scheme programme is extending the hours of operation of the Silver Street bus gate.**



## WHAT CHANGES ARE BEING MADE TO THE BUS GATE?

Currently, the bus gate only operates for part of the day (from 10am to 6am for city centre bound traffic and between midnight and 4pm for traffic leaving the city centre). These operating hours are now being extended so that the bus gate operates at all times in both directions, similar to other bus gates in the city centre. Those vehicles allowed to pass through the bus gate during the current operating hours (local buses, taxis, pedal cycles and other authorised vehicles) will be permitted to use the bus gate at all times during the trial period.

## WHEN IS THIS HAPPENING?

An experimental traffic regulation order has been made to extend the bus gate operating hours which will come into operation on **24th August 2020**. Changes will be made to existing signs to give effect to the extended operating hours and additional temporary signs will be provided on the approaches to the bus gate to advise drivers of the change.

## WHY ARE THE EXTENDED OPERATIONAL HOURS EXPERIMENTAL?

Extending the bus gate operating hours using an experimental traffic regulation order allows the change to be made more quickly in response to the Covid-19 pandemic. We will be consulting widely on the effects of the extended operating hours once implemented and during the first 6 months of the trial the public will have the opportunity to comment on its impact and to lodge any objections to making the experimental measure permanent. The trial period can last for up to a maximum of



18 months before which decisions need to be made on whether to make permanent, amend or discontinue the experiment.

## WHAT EFFECTS WILL THE MEASURE HAVE?

Extending the hours of operation of the bus gate will reduce traffic levels in Silver Street and the historic city centre, creating more space for walking and cycling, supporting social distancing.

Only local buses, taxis, pedal cycles and other authorised vehicles will be permitted to pass through the bus gate. Other motor vehicles will not be able to drive through the bus gate at any time during the trial period but all properties in the area will still be accessible by motor vehicle, including blue badge holder vehicles, via routes either side of the bus gate. The routes to access properties either side may be longer and in some cases less convenient.

## WHERE CAN I GET MORE INFORMATION?

More information on the experimental closure and other experimental measures being implemented by the GCP on behalf of the County Council is available on the GCP website: <https://www.gretercambridge.org.uk/experimental-traffic-orders>

If you want to keep in touch with any updates on the experimental traffic regulation orders, please visit [www.gretercambridge.org.uk/subscribe](http://www.gretercambridge.org.uk/subscribe) to be added to our mailing list.

## GET IN TOUCH

 [contactus@gretercambridge.org.uk](mailto:contactus@gretercambridge.org.uk)

 0345 0455212

 <https://twitter.com/GreaterCams>

 <https://www.facebook.com/GreaterCam>

 **Cambridgeshire County Council,  
Business Intelligence Service, OCT 1224,  
Castle Hill, Cambridge CB3 0AP**

(we have limited capacity to receive post at the present time, so please only post a response to us if this is the only way you are able to respond)