

Milton Road – Bus, Cycling and Walking Improvements Project

February 2023 Update

King’s Hedges Road/ Green End Road Junction

Works to the junction of King’s Hedges, Milton Road and Green End Road have now begun. The new junction will be constructed in sections with the traffic islands being removed.

We will be working on this junction for the next 10 months, Monday – Friday from 07:30 – 18:00. While this work is going on we will be using temporary traffic lights, closing some lanes, and introducing no right turn for vehicles travelling north from Milton Road onto Green End Road.

The no right turn will prevent vehicles waiting to turn into Green End Road from forming a queue on Milton Road, thereby blocking access for vehicles travelling north. We are introducing this new restriction to help with the traffic flow at this junction while we have the temporary lights in operation and one less lane for north bound traffic.

Vehicles wishing to access Green End Road who are travelling northbound on Milton Road will need to continue north to the Milton interchange/A14 roundabout, travel round the roundabout and head south down Milton Road to then turn left on to Green End Road.

Traffic leaving Green End Road onto Milton Road will be unaffected and pedestrians and cyclists will be able to access the pavement and crossings as normal.

The below map illustrates this diversion. All temporary road signs must be treated in the same respect as fixed versions as instructed by the Highway Code.

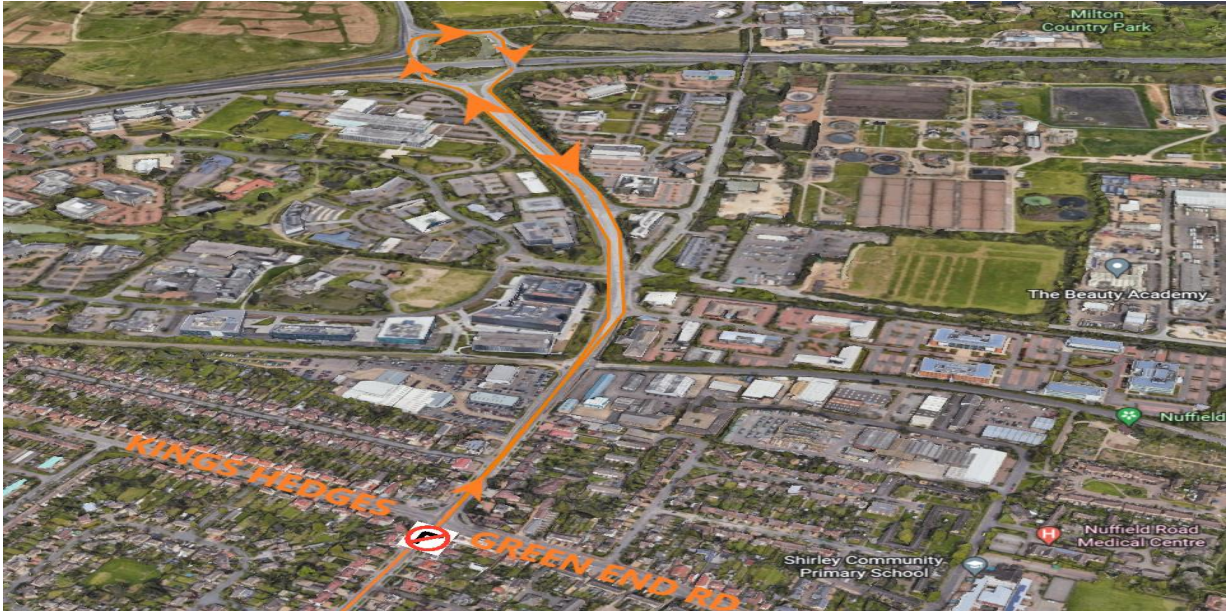
These arrangements will be in operation 24/7 for the next 10 months while the work on upgrading this junction is carried out.

We appreciate this is a busy junction and that the works will lead to some disruption. To mitigate we have invested in the best temporary traffic light system on the market so it can

If you’d like to receive updates directly, please do register at www.greatercambridge.org.uk/subscribe.

If you have any concerns during the construction, please do get in touch with Milestone’s project team on MiltonRoad@milestoneinfra.co.uk or telephone the 24 hour contact centre on 0800 023 4762

mimic the original traffic light sequencing as best it can. We will continue to monitor traffic flows at this junction as work is underway.



Revised arrangement for northbound traffic wanting to turn right into Green End Road

Road Maintenance

We were aware that the condition of Milton Road had progressively deteriorated with some sizable potholes appearing. This, combined with your feedback, led to us contact the highways team who are now repairing the potholes in stages.

One of the other areas of feedback you had for us was around the difficulty of seeing the correct road markings. As a result, areas of Milton Road's old white lines have been re-blackened out to provide greater visibility of the correct road markings road users are to abide by.

Cambridge Water

Cambridge Water have completed all their works on the Milton Road project and the traffic lights outside Ascham Road have now been removed. Cambridge Water have moved 385 m of water mains and piping including reconnecting 37 services at three sites along Milton Road. This has two benefits for the upgrade:

1. It allows us to move the kerbing line and install the new cycle lanes.

If you'd like to receive updates directly, please do register at www.greatercambridge.org.uk/subscribe.

If you have any concerns during the construction, please do get in touch with Milestone's project team on MiltonRoad@milestoneinfra.co.uk or telephone the 24 hour contact centre on 0800 023 4762

2. It also helps us with the space need for some of the new trees that we are putting in as part of the project.

Oak Tree Avenue Junction

Works at Oak Tree Avenue junction are continuing to progress. The junction has now been excavated and we are currently working on the underground utilities and new drainage is being installed.

While works are being carried out, the bus stop in this area is not operational – alternative bus stops are located opposite Downham’s Lane or opposite Ascham Road.



**Picture shows use of vacuum excavator for excavation of existing pavements.*

If you'd like to receive updates directly, please do register at www.greatercambridge.org.uk/subscribe.

If you have any concerns during the construction, please do get in touch with Milestone's project team on MiltonRoad@milestoneinfra.co.uk or telephone the 24 hour contact centre on 0800 023 4762

Union Lane

Union Lane works are continuing with kerbs and pavements currently being installed. The road will remain closed to motorists until works are complete, with access for cyclists and pedestrians maintained throughout.



*Photograph shows progress of pavement installation at Union Lane.

Kendal Way

We have been working on the Kendal Way entry/exit onto Milton Road since the beginning of February. This means that it is currently closed to vehicles and will be for approximately 10 weeks while works take place. Pedestrian access will be maintained throughout the closure. Vehicles are advised to follow the diversion access via Green End Road.



*Picture shows construction of kerbs and pavement on the junction of Kendal Way.

If you'd like to receive updates directly, please do register at www.greatercambridge.org.uk/subscribe.

If you have any concerns during the construction, please do get in touch with Milestone's project team on MiltonRoad@milestoneinfra.co.uk or telephone the 24 hour contact centre on 0800 023 4762

Drop In Sessions

Please note the future scheduling of the public drop in has changed since last month's update. Moving forward, these are now scheduled for the first Monday of the month.

The next monthly drop-in session will be Monday 6 March 11:00 – 12:30 at Milton Road library.

If you'd like to receive updates directly, please do register at www.greatercambridge.org.uk/subscribe.

If you have any concerns during the construction, please do get in touch with Milestone's project team on MiltonRoad@milestoneinfra.co.uk or telephone the 24 hour contact centre on 0800 023 4762