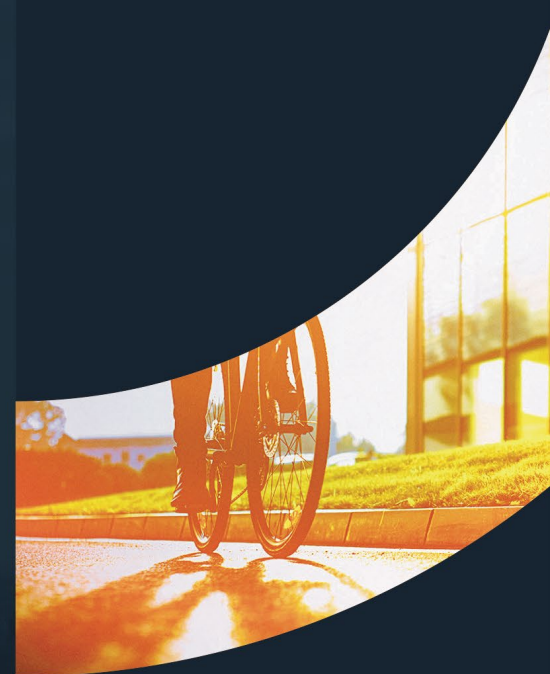




**GREATER
CAMBRIDGE
PARTNERSHIP**

Growing and sharing prosperity

Delivering our City Deal



Cambridge Eastern Access stakeholder workshop

Jo Baker

1 and 2 July 2020



Welcome and housekeeping

Please help us to manage the workshop by:

- indicating that you would like to speak by clicking the blue 'raise hand' icon
- saving questions until invited to speak
- keeping your microphone on mute until invited to speak
- not using the chat function unless you need to let us know you have technical difficulties



Cambridge Eastern Access: introduction to the project

The project's aims and objectives are to:

- Identify a variety of options which will improve the reliability, safety, capacity and speed of sustainable transport connections for those wishing to access Cambridge from the east.
- Improve connectivity between existing settlements and identify the best package of measures to ensure connectivity is in place at the opening of new developments, thereby reducing the propensity for trips to be made by the private car.



Cambridge Eastern Access: why do we need to act?

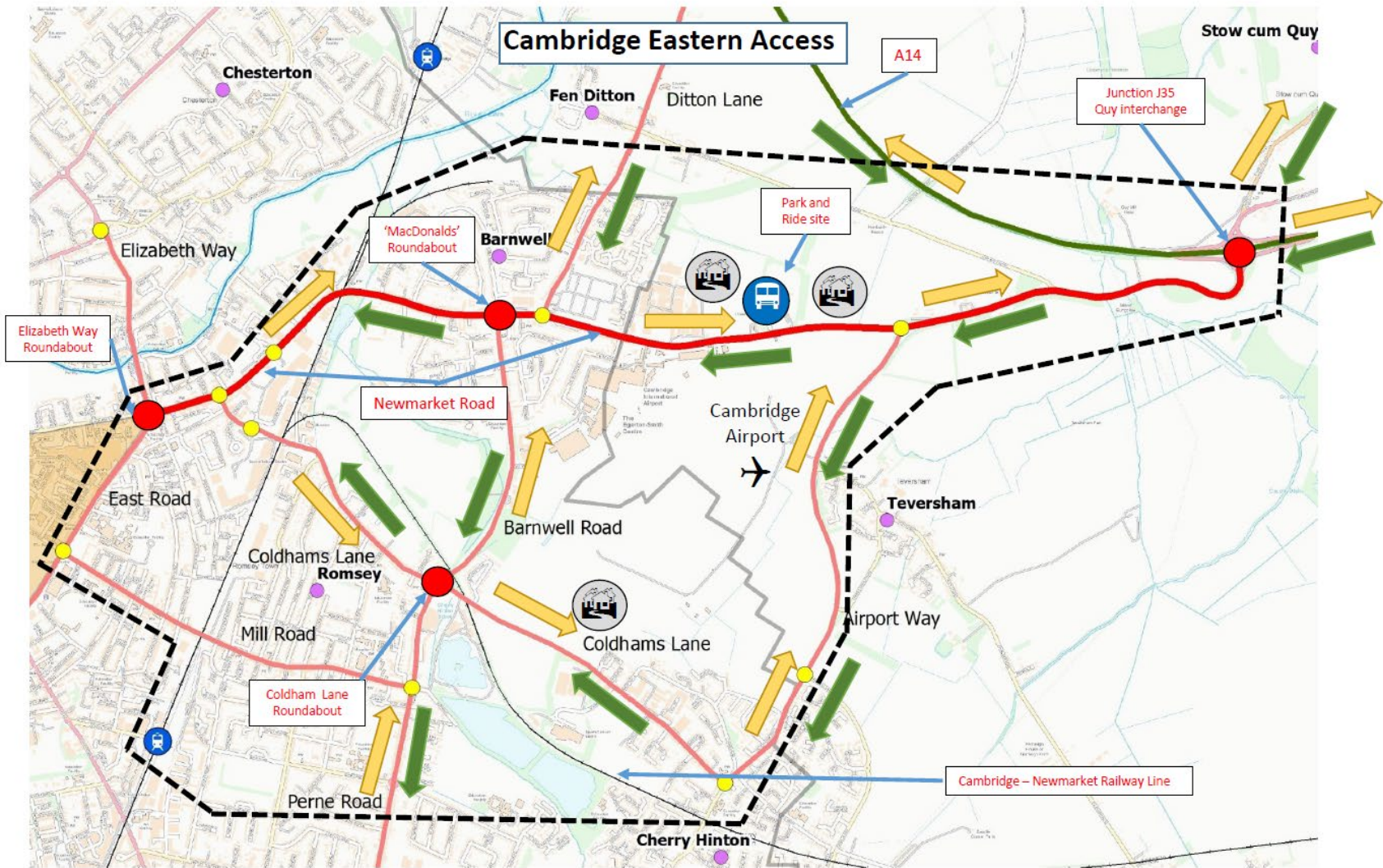
- Key radial and arterial routes from the east suffer significant congestion.
- Local Plan growth likely to worsen congestion without enabling infrastructure.
- Considerable development in the area.
- One of four areas identified by Executive Board for high quality public transport routes contributing to emerging CAM proposals.

Cambridge Eastern Access: transport projects

The following transport projects are under consideration/development in the area:

- Greenways routes to Horningsea, Bottisham and Swaffham (GCP project)
- Chisholm Trail (GCP project)
- Coldham's Lane Improvements (Combined Authority-led project)
- Newmarket - Cambridge railway line (possible long term capacity improvements (Cambridgeshire Corridor Study))





Short to medium term

- The road network is heavily congested during peak times and drivers face long delays.
- We must tackle gridlock and reduce escalating pollution levels that harm air quality.
- This project will be vital to Cambridge's recovery from the impacts of Covid-19.
- Improving public transport, walking and cycling is essential to connect existing and expanding communities to jobs, services and opportunities.

Medium to longer term

- Developing a dedicated public transport route for east Cambridge presents a future-proof, sustainable infrastructure investment and to enable growth in line with the area's Local Plan.
- GCP's corridor projects have been identified as one of several elements contributing to emerging CAM proposals. In line with DfT guidelines, a full process of consultation and assessment must consider all the viable options in order to identify a preferred scheme that can best deliver City Deal and project objectives.

Potential features

Nothing has been decided but features could include:

- Public transport routes
- Public transport priority
- Active travel improvements
- Travel hub/interchange



Next steps

- Engagement period runs from 6 July to 3 August 2020
- Continue the conversation: tell us your views via the ConsultCambs survey and map
- Engagement will feed into early project work and public consultation later in the year (subject to Executive Board approval to proceed)
- Contact us at contactus@greatercambridge.org.uk or call 01223 699906

Thank you